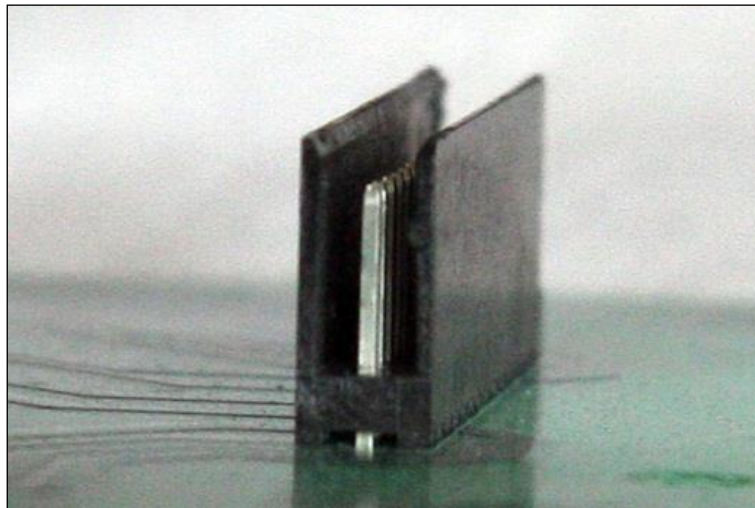


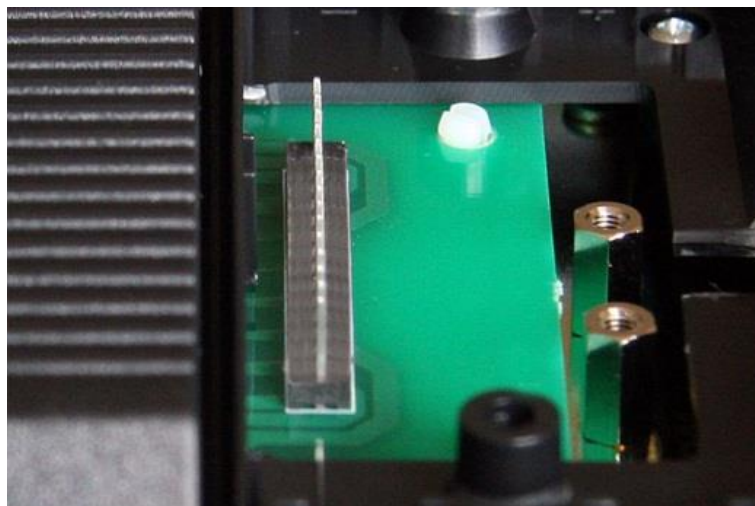
Replacing the cable on the Ergo Control hand pendant

As the connector at the hand pendant end of the cable has been replaced with a different type, you may have to modify the connector strip on earlier hand pendant models.

If it has side walls, you must...



... break and remove them



Be careful not to bend any connector pins. If the inner wall is hard to remove, you may have to remove four screws and lift off the bottom cover. Do not tighten the four screws too hard when putting the bottom cover back in place.