

## User Manual

# ErgoCom



# Table of Contents

<b>ErgoCom – short intro</b> .....	3
<b>Program installation</b> .....	4
<b>How to use ErgoCom</b> .....	6
Save.....	6
Load .....	6
Verify .....	6
Delete .....	6
Help and Close.....	7
<b>Settings</b> .....	8
Path to data files.....	8
Communication port .....	8
Sending/verifying parameters .....	8
<b>About tab</b> .....	9

# ErgoCom – short intro

The Ergo Control programmable positioner can, much like a robot, be programmed to follow a sequence of positions.

The capacity is 1000 program steps which can be divided into several programs. Each program must begin with a START-step (usually the load position) and end with an END-step (the last position). Between START and END you can have various positioning steps.

With the ErgoCom program running on a Windows PC, you can save the 1000 steps into a file, stored on your PC's hard disk. You can use it as a simple safety backup function. Or you can organize your jobs into separate files with unique names.

Your PC can store files with long filenames so it is possible to name a saved program "Part number 375642-678905-0". In that way you can have the name correspond to a part or drawing number.

To load a program or programs (all 1000 steps), you simply select a filename and click the Load button.

During Load, Save and Verify operations, the Ergo Control must be in programming mode (key switch on PROG) and not moving.

The Ergo Control machine parameters are included in the files on Save operations and on Load and Verify depending on a setting.

## **Important**

The computer you are going to use must have a serial communication port (9 pin male d-sub connector). If it does, you can skip to the next page.

In case it doesn't, you can use the supplied usb to com adapter. The most convenient way to install this adapter is, with the computer connected to internet, just plugging in the adapter and wait for Windows to install the drivers. With no internet connection or older versions of Windows, you can find instructions and drivers on the supplied USB memory stick.

When installed, you need to check what comport number was assigned to the adapter. Check in the Device Manager under Ports. Must be COM1 to COM4. Will be used in ErgoCom settings later.

# Program installation

If you have any applications running, we suggest that you close them first.

Insert the USB memory and run the file setup.exe.



When this window appears, click "OK"



Click the big button here



Click "Continue"

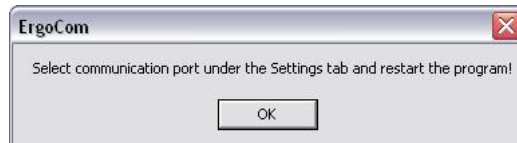


Click "OK"

You are done.

Now with the Ergo Control machine powered up and connected to your PC, you can start the ErgoCom program.

If this message appears,



or if you get this error text in red,



you need to set the correct communication port under the Settings tab, and then close and restart ErgoCom.

If communication now works, it will look like this:



# How to use ErgoCom

## Save

To save all 1000 steps and all parameters to a file in your PC you simply enter a filename in the upper text field and then click the Save button. When all data is fetched the filename is moved down to the list of available files.



If you want to update a previously saved file, you simply select the file from the listbox instead of entering the name from the keyboard, and then click the Save button.

## Load

To restore the 1000 steps previously saved, just select the right filename in the list and click the Load button. If you also want the parameters restored then mark the "Send param" checkbox under the Settings tab.

If you use ErgoCom strictly for backup then "Send param" can be left marked to make sure parameters will be restored. But if you want to run the same job in several Ergo Control machines and just copy the 1000 steps, then unmark it to avoid disturbing parameters that may differ between machines.

## Verify

To verify the 1000 steps and optionally the parameters previously saved, just select the right filename in the list and click the Verify button. If you want the parameters verified then mark the "Send param" checkbox under the Settings tab.

## Delete

To delete a file from the list, select the file and click the Delete button. You will be asked to confirm the deletion.

**Help and Close**

The Help button takes you to a ErgoCom support page on our web site. You need internet access.

The Close button closes the ErgoCom program. When the program stops, the settings and the window position is saved in a file called "ErgoCom.ini". The file is saved in the same directory as the application was installed in.

During any file transfer, this button changes into a Cancel button which you can use to stop the ongoing file transfer.

# Settings

## Path to data dir

If you want to save your Ergo Control data files in a separate directory or on a file server, you must set the path under the Settings tab. Select the drive and double-click the directory. The directory must be created first if it doesn't exist.

## Comport

Select the communication port connected to the Ergo Control positioner.

## Parameters

Mark to include parameters in Load and Verify operations.





# About tab

On the About tab you can check the program version number. There is also a link to our web site if you need to contact us.

